

She's a Nitwit

Andy Fite

Verse, freely

B \flat F/A E \flat /G F \sharp ^o

I'm in love, and it's fun. It's real-ly hap-pen-ing. I've found some-one. And I will

5 Gm⁷ C⁷ Cm⁷ D⁷

get her, or at least I'll try. Oh, I'll get her, I would bet-cha, and I

Refrain, bright bounce

8 E \flat ⁶ F⁷ B \flat maj⁷ B \flat ⁷

guess you can guess the rea son... She's a nit-wit. She's a fool.

13 E \flat maj⁷ A \flat ⁷

She's an id-i-ot. And as a rule, I don't like

18 Dm⁷ Gm⁷ C⁷

id-i-ots that much at all. But she's so

22 Cm⁷ G⁷ Cm⁷ F⁷

pret-ty, it's a pit-y but I think I've got to call her. She's a

26 B \flat maj⁷ B \flat ⁷

nit-wit. Yes it's true. And a

30 E \flat maj⁷ A \flat ⁷

bit of it will sure-ly do. But just a

34 Dm⁷ Gm⁷ C⁷

bit of it would be so fine. I don't know

38 Cm⁷ F⁷ Bb⁶

how I'm gon - na do it but I've got to make her mine! The

42 C#m⁷ F#⁷ Bmaj⁷

hours I will be spend - ing list - 'ning

46 Bm⁷ E⁷ Amaj⁷

to her tell me all a - bout some ser - ies on T. V. and I sup - pose

50 Am⁷ D⁷ Gmaj⁷

that for the first time in a - bout a hund - red years I'm gon - na

54 Gm⁷ C⁷ Cm⁷ F⁷

know what's on the ra - di - o, oh God I hate that mu - sic. She's a

58 Bbmaj⁷ Bb⁷

nit - wit. She's a flake. She's an

62 Ebmaj⁷ Ab⁷

id - i - ot, for heav - en's sake. And I'm an

66 Dm⁷ Gm⁷ C⁷

id - i - ot, it's plain to see. I'm gon - na

70 Cm⁷ Dm⁷ G⁷ Cm⁷ F⁷ Bb⁶

be so bored I know it but she looks so good to me.

74

(solo)

63

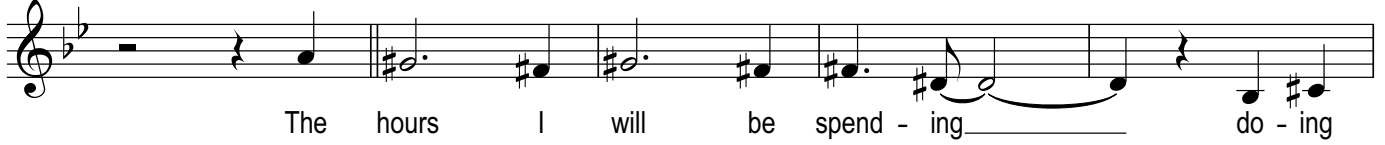


137

C#m7

F#7

Bmaj7



142

Bm7

E7

Amaj7

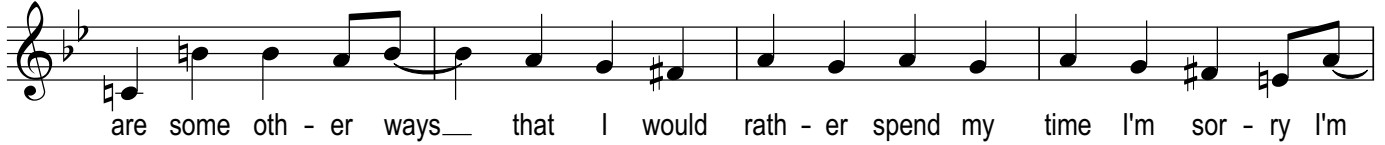


146

Am7

D7

Gmaj7



150

Gm7

C7

Cm7

F7



154 Bbmaj7

Bb7



158 Ebmaj7

Ab7

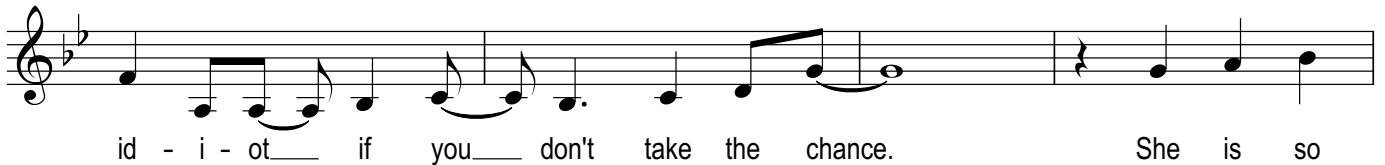


162

Dm7

Gm7

C7



166

Cm7

Dm7

G7

Cm7

F7

Bb6

